

HEAVY DUTY TRUCK TIRES

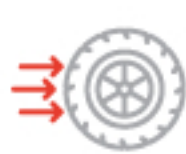
Where the Rubber Meets the Road

Terms to know:



VULCANIZATION

The process of heating rubber with sulfur to create a pliable material.



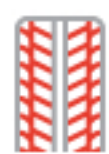
ROLLING RESISTANCE

The force required to keep a tire moving at a constant speed.



SIDEWALL

The part of the tire between the tread and the wheel rim.



TREAD

The grooved material that makes up the outermost layer of a tire.



TREAD DEPTH

The measurement of the usable tread left on a tire.



TRACTION

The friction between the tire and the road surface.

Fun Fact:

"Gator" is a term used to describe tread that has separated from heavy truck tires and resembles an alligator on the roadway.



Which company holds a Guinness World Record for producing the most tires each year?
*Find the answer at the bottom of this infographic

DID YOU KNOW?

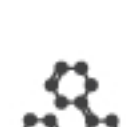
it takes more than 200 RAW MATERIALS TO MAKE A TIRE

These materials are categorized into five groups



CHEMICALS

Chemicals such as sulfur and zinc oxide are added during manufacturing to help with the vulcanization process and tire performance. Many chemical agents create unique properties like low rolling resistance and traction.



CARBON BLACK & SILICA

Carbon black and silica are used as fillers to add strength. Carbon black is what gives tires their dark color — rubber is actually white.



SYNTHETIC RUBBER

Synthetic rubber is made from crude oil and other petrochemicals. Approximately 70% of all rubber is synthetic.



NATURAL RUBBER

Natural rubber is harvested from the rubber tree in the form of latex. More than 90% of natural rubber comes from Southeast Asia.



REINFORCEMENTS

Both metallic and textile reinforcements are added to provide rigidity and shape. Common materials are wires, rayon and nylon.

Tire Maintenance

Taking care of heavy duty tires is important for safety and vehicle performance. Use these tips to keep tires in good condition.

1

CHECK PRESSURE

Always check air pressure when tires are cold

2

INSPECT TIRES

Inspect tires for cracks, gouges and tread wear before each trip

3

REPAIR OR REPLACE

Replace or fix tires that don't meet FMCSA Compliance, Safety, Accountability (CSA) regulations



The FMCSA assigns points for various tire violations. Examples include:

8 POINTS: Tread and/or sidewall separation

Flat and/or audible air leak

3 POINTS: Exceeding tire weight rating

Tire underinflated

IT TAKES TIRES 50-80 YEARS TO DECOMPOSE Naturally

Top 4 Tire Manufacturers

- Bridgestone Corporation®
- Cooper Tire & Rubber Company®
- Michelin®
- The Goodyear Tires & Rubber Company®

so, once a tire is deemed unusable, it's often recycled. Recycling benefits the environment because it keeps tires out of landfills.

5 USES FOR RECYCLED RUBBER

ASPHALT

MULCH

FLOOR MATS

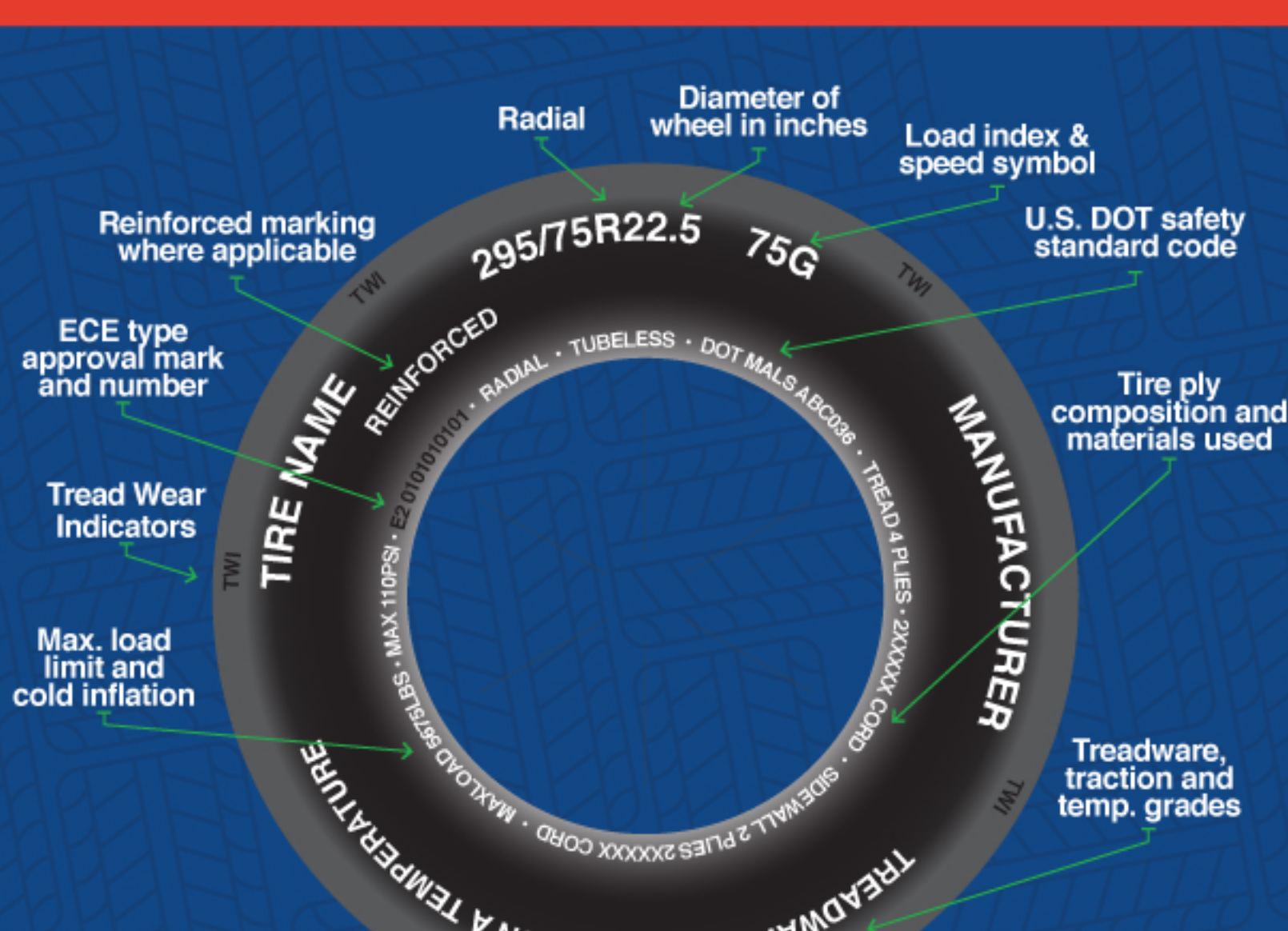
SOIL ADDITIVES

ASTROTURF

UNDERSTANDING YOUR SIDEWALL

Did you know tires are rated for speed and loading capacity?

Learn where the information is located:



Lego® - They make more than 318 Million tires annually!

*Find the question near the top of this infographic!

FleetNet
America

Sources:
<https://rma.org/about-rma/rubber-faqs>
<http://fr.michelin.ca/US/en/help/how-is-a-tire-made.html>
<http://www.ecy.wa.gov/programs/swfa/tires/reuse.html>
<http://www.munciansanitary.org/blog/2016/09/21/recycling/recycling-tires-101/>
<https://csa.fmcsa.dot.gov/documents/smsmethodology.pdf>
<https://www.lego.com/en-us/about-us/news-room/2012/june/guinness-world-record-to-the-lego-group>